

## C90 descaling and flushing pump



- High performance to enable descaling of severely fouled equipment.
- Descaling chemicals safely contained at all times within integral tank.
- Self priming for ease and safety.
- Acid proof.
- Instantaneous flow reverser for faster and more effective descaling.
- Optional fresh water flush facility\*.
- No seals to leak; Run dry capability; maintenance free.
- Complete with hoses and fittings.
- 57 litre tank.
- Portable - large diameter wheels for use anywhere on production floor.
- Supporting range of SCALEBREAKER descaling chemicals.

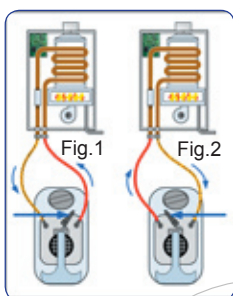
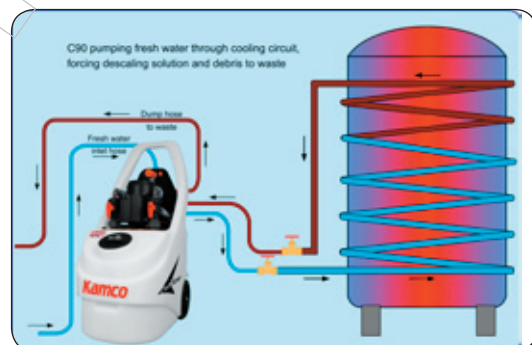
Scalebreaker C90  
Standard model



**Built to handle the strongest descaling chemicals**

### Applications include:

- Domestic and industrial boilers, including combination boilers
- Steam generators and water heaters
- Storage water heaters and calorifier
- Fan coil units and pipework
- Cooling coils and water cooled rollers
- Condensers and chillers
- Plastics machinery - oil coolers, mould tools, extruder barrels and pipework
- Plate and shell type heat exchangers
- Cooling circuits.



### The advantages of flow reversal when descaling and chemical cleaning

During descaling limescale dissolves with the evolution of gas. The resulting effervescence and foaming can create a barrier which impedes, and in some cases prevents descaling chemical from further reaction with the deposits. Reversing the direction of flow and return with the flow reverser (see Fig.1 and Fig.2) allows the foam and gas

to discharge through the tank, eliminating the barrier effect. Apart from allowing deposits to be attacked from both sides, penetrating and breaking up their structure and speeding the descaling process considerably, flow reversal often enables previously blocked tubes and heat exchangers to be successfully descaled.

### Scalebreaker C90 technical data

Electric motor	0.75 HP, IP55 rating, 220 or 110 volt	Flow and return hoses	2 x 3 mt hoses, 19 mm reinforced clear PVC
Tank capacity	57 litres (12.5 gallon)	Hose end fittings	3/4" BSP x 19 mm hose couplings
Max. flow rate	150+ l/min	* C90 with fresh water flush facility also includes the following hoses:	
Max. head	24 mt	Dump hose	1 x 3 mt, 19 mm reinforced clear PVC
Chemical handling ability	All commercially available acids, alkaline solutions, chlorine solutions	Water inlet hose	1 x 3 mt, 13mm reinforced yellow PVC
Max. temperature	70° C.	Weight (without hoses)	22.5 kg